



**GEARHEADS(POWERFUL TYPE)** Frame size 90mm sq. (3.54 in. sq.)

BALL BEARING TYPE

▶ **RATED TORQUE OF GEARHEAD**

MODEL	Speed(rpm)		500	300	200	120	100	60	50	30	20	15	10	9	6	5	3	2	1	
	Ratio	Speed	50Hz	3	5	7.5	12.5	15	25	30	50	75	100	150	166.7	250	300	500	750	1500
			60Hz	3.6	6	9	15	18	30	36	60	90	120	180	200	300	360	600	900	1800
<b>L9VK□B</b> <b>L9WK□B</b> <b>L9V10D(DECIMAL)</b>	High	kg-cm	11.9	19.8	29.8	44.7	53.7	80.9	97.0	161.7	200	200	200	200	200	200	200	200	200	200
	Low		7.5	12.6	18.8	28.3	33.9	51.2	61.4	102.3	137.2	182.9	200	200	200	200	200	200	200	200
	High	N-m	1.17	1.94	2.92	4.38	5.26	7.92	9.51	15.85	19.60	19.60	19.60	19.60	19.60	19.60	19.60	19.60	19.60	19.60
	Low		0.74	1.23	1.85	2.77	3.33	5.01	6.02	10.03	13.44	17.92	19.60	19.60	19.60	19.60	19.60	19.60	19.60	19.60
	High	oz-in	165	276	413	621	745	1123	1347	2246	2777	2777	2777	2777	2777	2777	2777	2777	2777	2777
	Low		105	174	262	393	471	710	852	1421	1905	2540	2777	2777	2777	2777	2777	2777	2777	2777

- \* The normal torque is that the motor and gearhead are directly coupled.
- \* Insert the denominator of reduction ratio in □ of gearhead model name.
- \* Actual rotation speed is 2-15% less than synchronous speed.
- \*   Color indicates that the rotation of gearhead shaft is in opposite direction as output shaft of motor.

With Decimal Gearhead

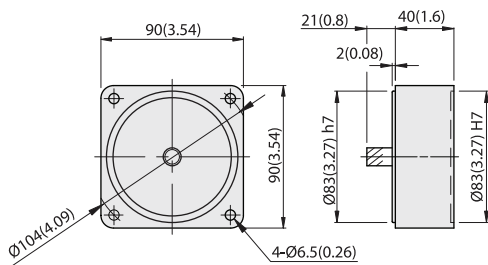
SPEED CONTROL & BRAKE  
REVERSIBLE MOTORS

**DIMENSIONS**

Unit : mm(inch)

**DECIMAL GEARHEAD**

**L9V10D**

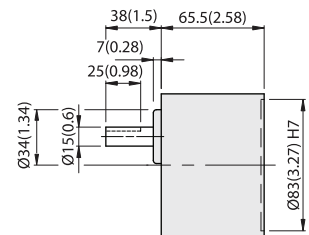


WEIGHT 0.6kg (1.3 lb)

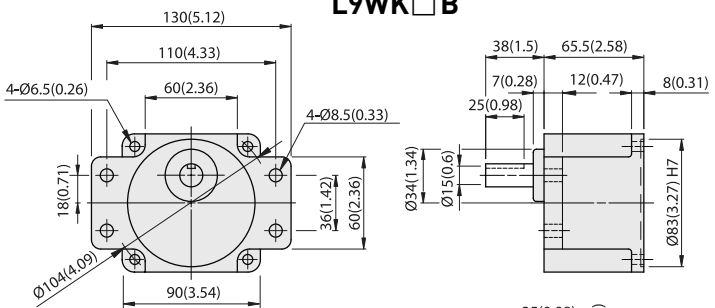


**GEARHEAD**

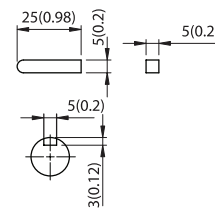
**L9VK□B**



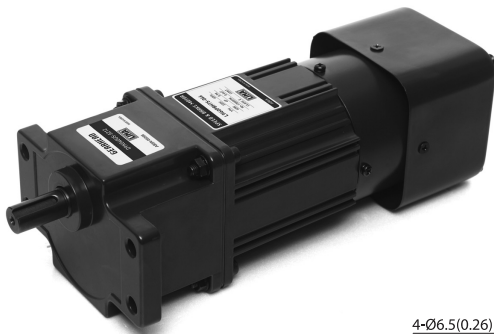
**L9WK□B**



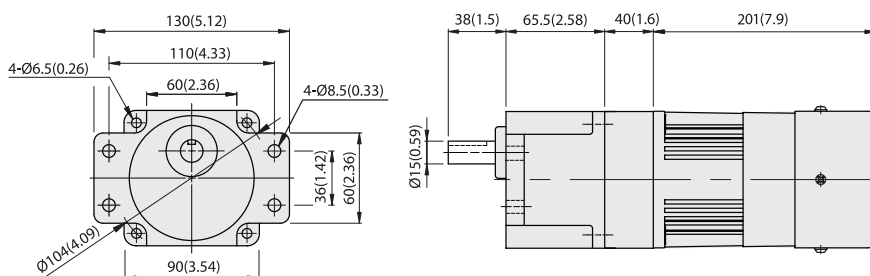
MODEL	GEAR RATIO	WEIGHT		BOLT
		kg	lb	
L9VK□B	1/3~1/200	1.5	3.3	M6x95
L9WK□B	1/3~1/200	1.6	3.5	M6xL25



KEY SIZE



**L9VK□B + L9V10D + L9R60P□ HES**





## GEARHEADS(ULTRA POWERFUL TYPE) Frame size 90mm sq. (3.54 in. sq.)

BALL BEARING TYPE

### ▶ RATED TORQUE OF GEARHEAD

MODEL	Speed(rpm)		500	300	200	120	100	60	50	30	20	15	10	9	6	5	3	2	1	
	Ratio	Speed	50Hz	3	5	7.5	12.5	15	25	30	50	75	100	150	166.7	250	300	500	750	1500
L9UK□B	High	kg-cm	11.9	19.8	29.8	44.7	53.7	80.9	97.0	161.7	216.8	289.1	300	300	300	300	300	300	300	300
	Low	kg-cm	7.5	12.6	18.8	28.3	33.9	51.2	61.4	102.3	137.2	182.9	274.4	274.4	300	300	300	300	300	300
L9V10D(DECIMAL)	High	N-m	1.17	1.94	2.92	4.38	5.26	7.92	9.51	15.85	21.25	28.33	29.40	29.40	29.40	29.40	29.40	29.40	29.40	29.40
	Low	N-m	0.74	1.23	1.85	2.77	3.33	5.01	6.02	10.03	13.44	17.92	26.89	26.89	29.40	29.40	29.40	29.40	29.40	29.40
	High	oz-in	165	276	413	621	745	1123	1347	2246	3011	4015	4166	4166	4166	4166	4166	4166	4166	4166
	Low	oz-in	105	174	262	393	471	710	852	1421	1905	2540	3810	3810	4166	4166	4166	4166	4166	4166

With Decimal Gearhead

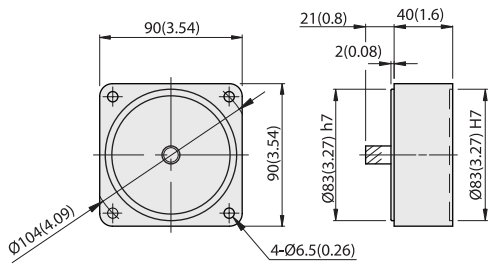
- \* The normal torque is that the motor and gearhead are directly coupled.
- \* Insert the denominator of reduction ratio in □ of gearhead model name.
- \* Actual rotation speed is 2-15% less than synchronous speed.
- \*   Color indicates that the rotation of gearhead shaft is in opposite direction as output shaft of motor.

### DIMENSIONS

Unit : mm(inch)

#### DECIMAL GEARHEAD

##### L9V10D

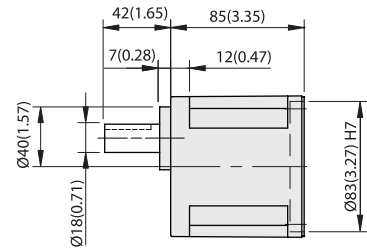
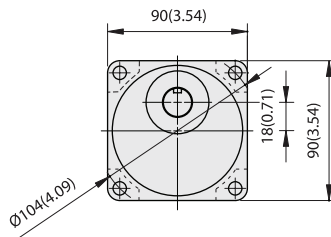


WEIGHT 0.6kg (1.3 lb)

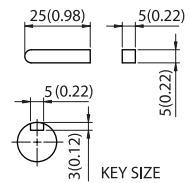


#### GEARHEAD

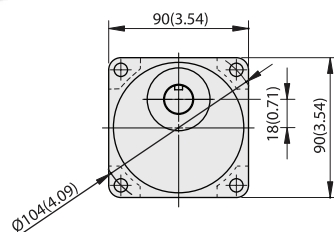
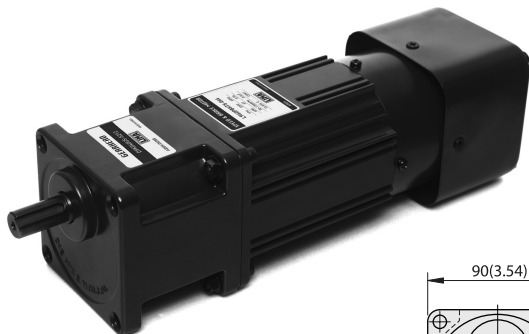
##### L9UK□B



MODEL	GEAR RATIO	WEIGHT		BOLT
		kg	lb	
L9UK□B	1/3~1/200	1.95	4.3	M6xL20



KEY SIZE



##### L9UK□B + L9R60P□ HES

